



Thank you to our reception sponsors

FLORIDA CHAMBER FOUNDATION

KEISER UNIVERSITY





Workforce Florida, Inc.
BOARD of DIRECTORS MEETING

May 28, 2009
8:30 a.m. – 12 p.m.
The DoubleTree Hotel | Tallahassee, Florida



BOARD of DIRECTORS MEETING

Welcome *and* Introductions

Belinda Keiser
CHAIRMAN



CONSENT ITEM

Approval of Minutes

Draft Minutes for the February 19, 2009, Board of Directors meeting and the March 18, 2009, April 15, 2009, and May 14, 2009, Executive Committee Teleconferences, have been prepared for approval by the Board.

NEEDED ACTION

Approve the draft Minutes of the previous Board meetings to include any modifications or changes noted by the Board.

BOARD *of* DIRECTORS MEETING


President's Report

Chris Hart
PRESIDENT/CEO



President's Report


Highlights:

- The 2009 Legislative Session
 - Workforce Florida Update
 - Florida's Workforce System
 - The Strategic Planning Process
- 
- A decorative graphic of several overlapping, stylized leaves in shades of green, located in the bottom right corner of the slide.

The 2009 Legislative Session

Session by the Numbers:

\$6 billion shortfall

- \$3 billion from Stimulus Funding
 - \$3 billion combination of cuts or new revenue
 - \$1.4 billion from Transportation & Eco. Dev. Appropriations
 - » \$800 million from user fees
 - \$500 million from one time Trust Fund sweep to GR
 - » \$130 million from cuts
 - **One-week extension**
 - **The budget was one of the only 250 bills passed**
 - Fewest passed in a decade
- 
- A decorative graphic of several overlapping, stylized leaves in shades of green, located in the bottom right corner of the slide.

The 2009 Legislative Session

FY 2009-2010 Budget

- Workforce Investment Act Funding
 - \$144.3 million (73.6% increase)
- Temporary Assistance for Needy Families (TANF) Funding
 - \$94.7 million (9.3% increase)
 - Earmarks for Economic Passport (\$2.5 m) & Non-Custodial Parent Program (\$1.4 m) remain
- Wagner-Peyser Funding
 - \$39.3 million (7.8% increase)

The 2009 Legislative Session

FY 2009-2010 Budget & Legislation

- Workforce Florida Operations
 - \$3,178,479 million
- Quick Response Training
 - \$3.3 million
- Incumbent Worker Training
 - \$4 million
- SB 1062 – Professional Employer Organizations by Sen. Mike Fasano
 - Requires PEOs to report same employment and wage data on their clients as is required of all other Florida employers

Today's Budget Highlights



State Set-Aside Funding

- Youth Opportunities Committee - \$4 million
- Banner Centers - \$3.5 million
- Workforce Training Institute - \$1 million
- Military Spouse Program - \$700k
- Governor's Exigency Funding - \$3 million
- Aerospace Workforce Transition Funding - \$1.85 million
- Rural Regions Special Allocation (5 Regions) - \$600,000
- Regional Performance Incentives - \$4 million
- Emergency Reserve - \$3 million
- Council Reserves - \$6 million

Workforce Florida Update



Employ Florida Healthcare Workforce Initiative

- **Expanded Pilot in Progress – RWBs 20 - 23**
 - Workforce Solutions – Gwenda Thompson
 - Workforce Alliance – Kathryn Schmidt
 - WorkForce One – Employment Solutions – Mason Jackson
 - South Florida Workforce Board – Rick Beasley
 - HCA – Up to 12 hospitals – Beth Brill
- **Progress to Date**
 - 18 critical occupations – from entry-level to RNs – identified
 - Joint Employed Worker Training application developed
 - Recruitment, pre-assessment process – using special proprietary tools – have been agreed to
 - Two community colleges developing new two-year class for RNs – expected output 60 new nurses in the region

Workforce Florida Update

Employ Florida Healthcare Workforce Initiative

- **Next Steps**

- Finalize MOU agreement with HCA
 - HCA corporate is considering additional resources for this pilot
- Move forward with implementation plan and send funds to RWBs for execution
- Workforce Florida will construct a brief competitive proposal
 - Proposal will include rigorous pre-assessment, identification of critical occupations, leverage of resources and innovation
 - All RWBs may respond
 - Open to all hospitals in their region

Workforce Florida Update

Workforce Florida's Talent Tool Kit

- **Incumbent Worker Training Grant (2008 – 2009 FY)**

- Awards: 113
- Total Dollars: \$2,365,272
- Avg. Award: \$20,932
- Trainees: 6,187
- Avg. Cost per: \$382

Workforce Florida Update

Workforce Florida's Talent Tool Kit

- **Quick Response Training Grant (2008 – 2009 FY)**

Standard QRT

- Awards: 45
- Total Dollars: \$12,825,852
- Avg. Award: \$291,497
- Trainees: 14,498
- Avg. Cost per: \$885



Workforce Florida Update

Workforce Florida's Talent Tool Kit

- **Quick Response Training Grant (2008 – 2009 FY)**

Rural Utility

- Awards: 9 (includes 26 companies)
- Total Dollars: \$1,901,035
- Avg. Award: \$211,226
- Trainees: 1,673
- Avg. Cost per: \$1,136



Workforce Florida Update

Workforce Florida's Talent Tool Kit

- **Quick Response Training Grant (2008 – 2009 FY)**

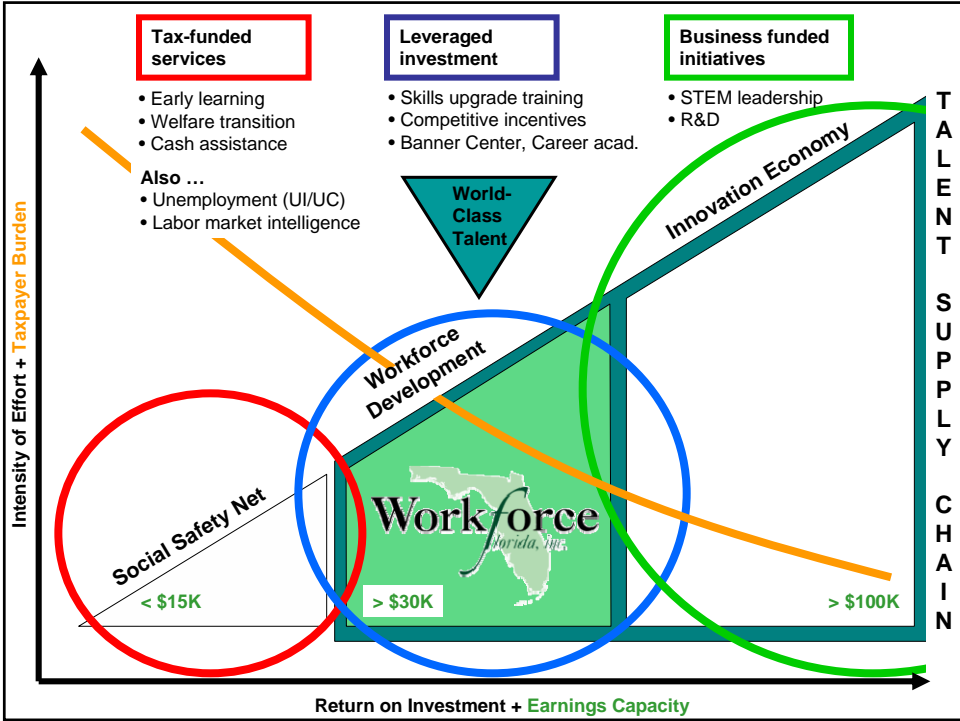
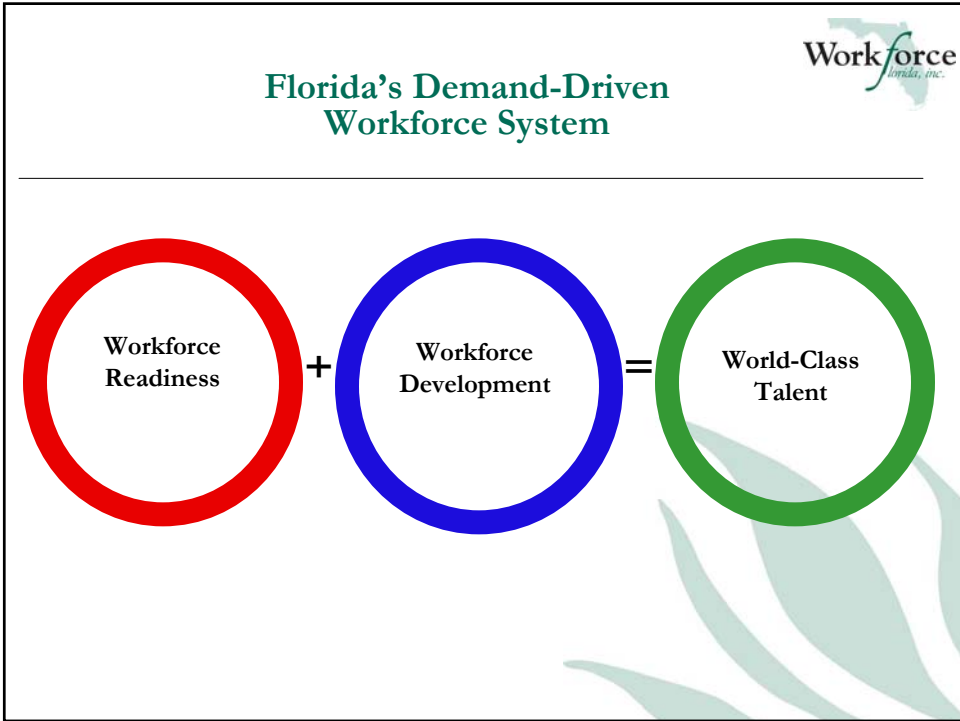
Global Trade Training

- Awards: 1 (includes 6 projects)
- Total Dollars: \$460,924
- Trainees: 626
- Avg. Cost per: \$736

Florida's Workforce System

Today's Workforce Challenge:

Helping Floridians find and retain employment during the current economic downturn with an eye toward securing the state's future as the economy rebounds



The Strategic Planning Process

June and July

- 10 Strategic Planning Regional Forums
- Coordinated by Enterprise Florida and the Regional Economic Development Partners

August

- Workforce Strategic Plan Focused Board Meeting


September and October

- Issue Forums
- Florida Chamber Foundation Talent Caucus Meeting

November and December

- Draft report written and circulated
- Final Report written

January

- Submit State Strategic Plan for Workforce Development
- 
- A decorative graphic of several overlapping, stylized leaves in shades of green, located in the bottom right corner of the slide.

Recognitions

Shayne Stewart

Florida Professional Firefighter of the Year

Andra Cornelius

Toni Jennings Workforce Development
Professional of the Year

A decorative graphic of several overlapping, stylized leaves in shades of green, located in the bottom right corner of the slide.

Thank you!



COUNCIL *and* COMMITTEE REPORTS

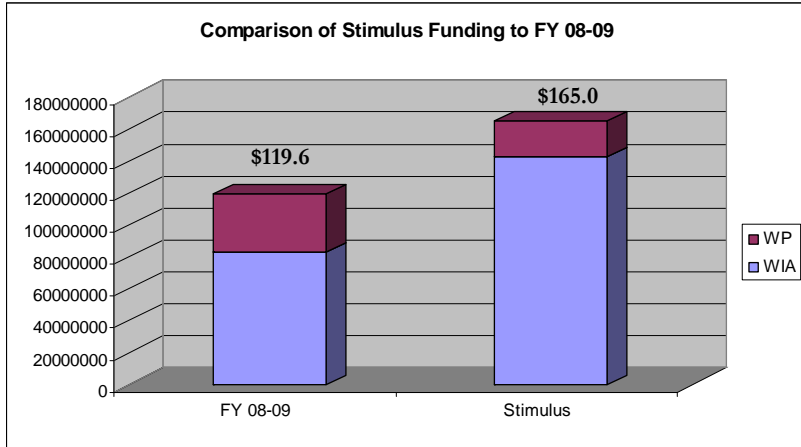
**Finance & Administration
Council**



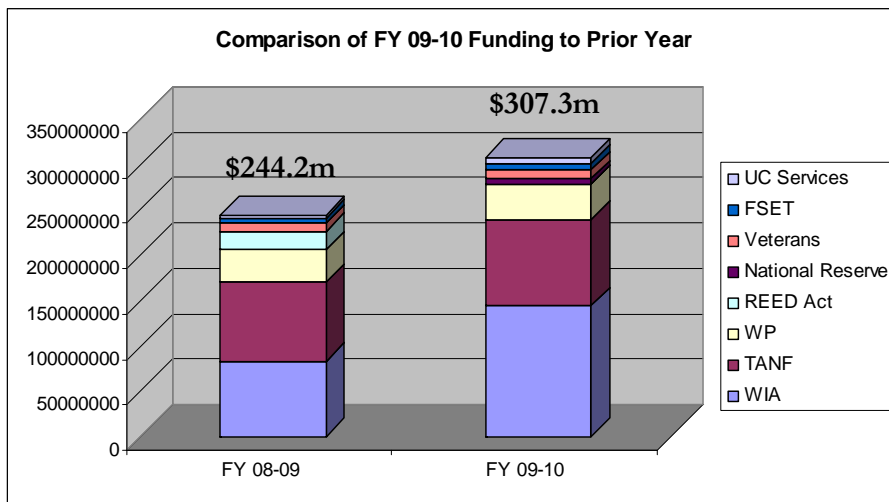
Mark Wilson
CHAIR



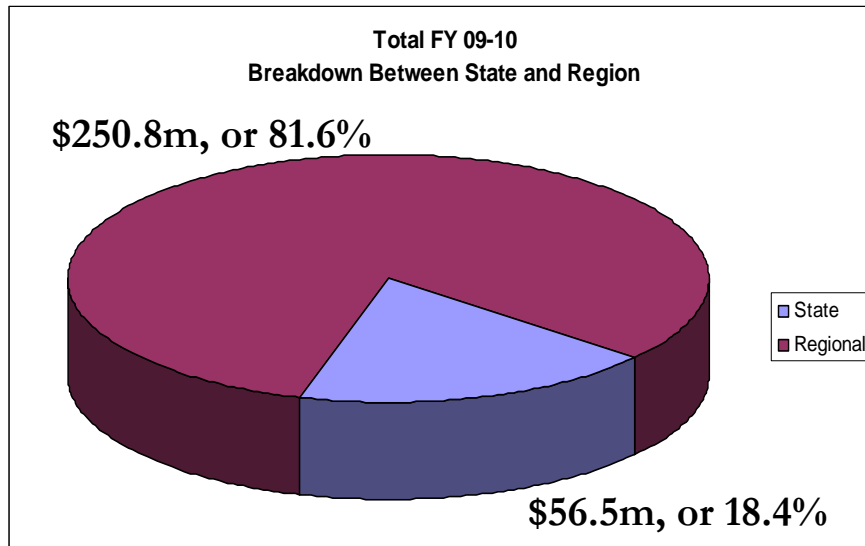
Comparison of ARRA Stimulus Funding to Prior Year WIA & Wagner-Peyser



Workforce System Funding



Workforce System Funding



Required Statutory Commitments



- Incumbent Worker Training - \$2.0 million WIA
- Rapid Response Emergency Reserve - \$3.0 million WIA
- Passport to Economic Progress - \$2.5 million TANF
- Non-Custodial Parent Programs - \$ 1.416 million TANF

Continuation of Board Initiatives

- Employ Florida Banner Centers - \$3.5 million WIA
- Shuttle to CEV Transition - \$1.85 million WIA
- Regional Performance Incentives - \$3 million WIA and \$1 million Wager-Peyser 7(b)
- Rural Initiatives - \$600,000 WIA

Other Proposed Discretionary Allocations

From WIA State-Level Set-Aside Funds:

- | | |
|--------------------------------------|-------------|
| • Council Reserves | \$6 million |
| • Targeted Youth Initiative | \$4 million |
| • Governor's Exigency Reserve | \$3 million |
| • Workforce Training Institute (1/2) | \$500,000 |

From Wagner-Peyser 7(b) State Funds:

- | | |
|---------------------------------------|-----------|
| • Employ Florida/Business Outreach | \$775,000 |
| • Targeted Industry Sector Strategies | \$650,000 |
| • Military Spouse Program | \$700,000 |
| • Workforce Training Institute (1/2) | \$500,000 |

Supplemental Allocation to Regions

Total RR Available Funds	<u>\$19,684,726</u>
Less: AWI RR Program Costs	-875,146
Shuttle to CEV	-1,850,000
Regional Perf Incentives	-3,000,000
Emergency Reserve	<u>-3,000,000</u>
Rapid Response Balance	\$10,959,580
<i>Proposed Regional Allocation</i>	<i>\$10,000,000</i>

ACTION ITEM 1A

Approval of FY 2009-2010

State & Regional Budget

Allocations

NEEDED ACTION

Approval of the budget recommendations for state and regional distributions, as approved by the Finance and Administration Council and presented within the Board packet for the several programs identified therein, and

Approval to allocate \$10 million Rapid Response state-level funds to regional boards

COUNCIL *and* COMMITTEE REPORTS

Strategy Council

David Armstrong, Jr.
CHAIR



COUNCIL *and* COMMITTEE REPORTS

Business Competitiveness Council

Dwayne Ingram
CHAIR



COUNCIL *and* COMMITTEE REPORTS

Workforce Readiness & Performance Council



Eric Kennedy
CHAIR

ACTION ITEM 4B

Approval of 2009-2010 Instructions For Local Planning and Regional Board Membership Re-Certification

NEEDED ACTION

Approve request to extend the RWBs current plan into Program Year 2009 until a plan modification can be submitted by the regions and approved by this board.

Approve 2009-2010 Local Workforce Services Plan instructions to be used by the RWBs in developing their plan.

Authorize Vice President Workforce Performance to adjust the planning instructions, if needed, to include changes that impact the local planning instructions resulting from public review of the State WIA Plan.

ACTION ITEM 4C

Food Stamp Employment & Training (FSET) State Plan & Allocation of Funding

NEEDED ACTION

Request that the Executive Committee approve at its June meeting the modified FSET State Plan and allocation of funding to RWBs for the period beginning July 1, 2009.

PRESENTATION

American Recovery and Reinvestment Act of 2009



Don Winstead
SPECIAL ADVISOR
TO THE GOVERNOR

AGENCY *and* PARTNER REPORTS

Agency for Workforce Innovation



Cynthia Lorenzo
INTERIM DIRECTOR

AGENCY *and* PARTNER REPORTS

Partners Council



Bruce Ferguson
PARTNERS COUNCIL
REPRESENTATIVE



BOARD *of* DIRECTORS MEETING

Information Items



BOARD *of* DIRECTORS MEETING

Open Discussion & Public Comment



UPCOMING MEETINGS

Executive Committee Teleconference	June 17, 2009
Executive Committee Teleconference	July 15, 2009
Board of Directors Meeting	August 11-13, 2009



BOARD *of* DIRECTORS MEETING

Chair's Closing Remarks



